



Portable Power

BL 1200 HMI | Balloon light



More light
Less consumption



Balloon light	BL 1200 HMI
GENERAL INFORMATION	
Power	1200 W
Lamp type	HMI
Package dimension	95x35x33 cm
Balloon weight	10 kg
Envelope diameter	110 cm
LIGHTING	
Lighted area	2500 m ²
Light under the balloon	560 lux
Maximum Lumen	110 000 Lm
ELECTRICAL	
Frequency	50 Hz
Voltage	230 V (110 V UK option)
Number of lamps	1
Power cables	3G1.5
Protection (fuse)	10 A
Lamp holder type	G38
Cable	6 m
SAFETY	
Wind speed resistance	100 km/h
Noise level	60 dBA
Global protection rating	IP 54
Internal pressure (air)	3 mbar
Infl ation time	45 s
Operating temperature	-20 / +40°C
Power consumption	2 kW
Required generator	2.5 kVA
Assembly time	< 10 min
Plug power supply	Schuko (UK option)
Telescopic rod height (option)	5 m



Robust

- Strong balloon envelope
- Resistant to environment (insects, rain, etc) - IP54
- Wind speed resistance of 100 km/h.



Convenient

- Easy to carry (10 kg) - packs into a small bag
- Self-infl ates with air in 45s for instant illumination
- One man installation job - set up time less than 10 min.



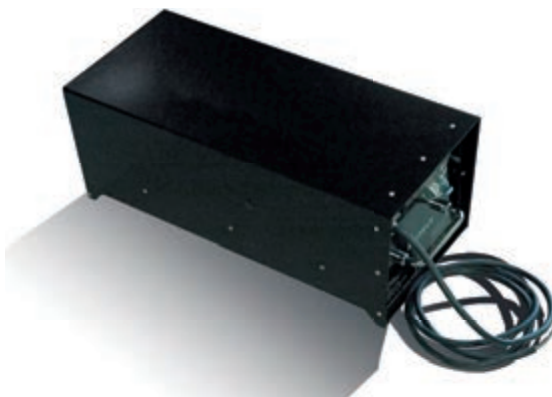
Versatile

- Mounts onto any piece of equipment or can stand alone
- Light can move with the job - increases productivity.



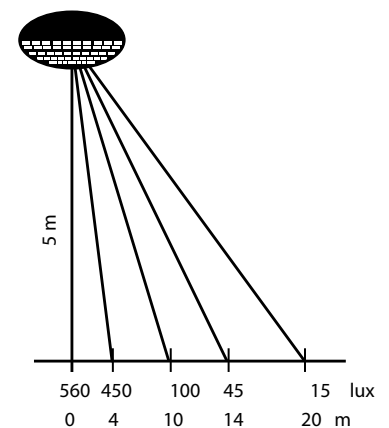
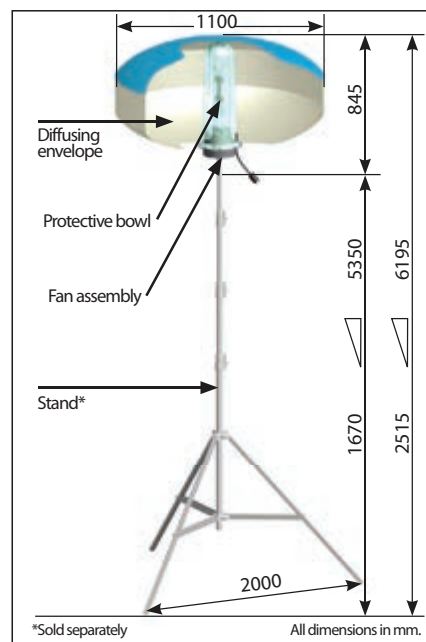
Innovative protective bowl

- Protects the lamps
- Few electrical components in the balloon.



Hot restrike ballast

- To save time at the jobsite
- Dimensions: 81x45x33cm
 - Weight: 28kg (61.5lbs).



Comfort / Safety

- Glare free light - can be looked at without being dazzled
- Very limited shadow
- 360° area covered - 2500 m²
- High-diffusion coverage for a group of workers.

www.doosanportablepower.com



Portable Power